

# Spraying nozzles Type J

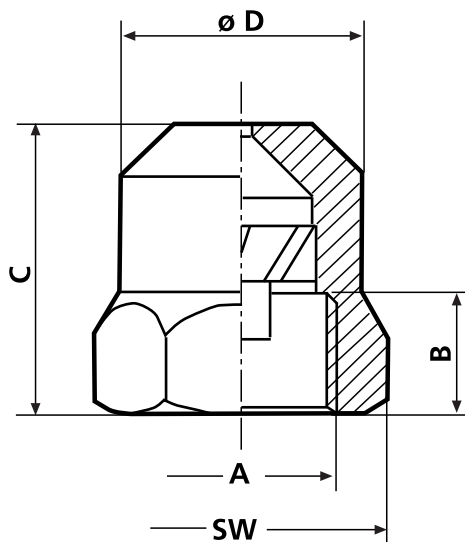
**Full cone nozzles, for systems of continuous straining usage.**

The reference is composed of 2 numbers: the first one is 10 times the flow in standard pressure (2.8 bar) and the second one is the spraying angle.

For the request of adapted products, the following specifications are needed:

- Material
- Pulverization angle
- Kind of nozzle
- Ring
- Flow (l/min or l/h)
- Work pressure

The nominal flow is pulverizing water in normal conditions in an aerial way.

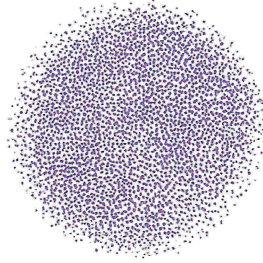


Measures in mm

A	B	C	D	SW
<b>1/4 GAS</b>	10	25	21	22
<b>3/8 GAS</b>	10	25	21	22
<b>1/2 GAS</b>	10	27	26	27

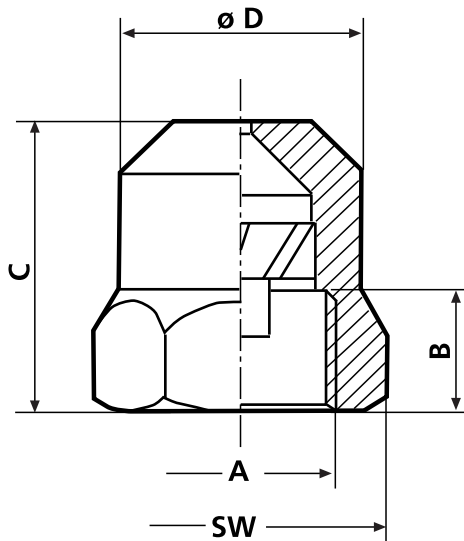
Material: Brass

Reference	Ring			Angle	Flow (l/min)		
	1/4	3/8	1/2		1 bar	2,8 bar	5 bar
20.45		✓	✓	45°	1,20	2,00	2,67
30.45		✓	✓	45°	1,79	3,00	4,01
40.45		✓	✓	45°	2,39	4,00	5,35
50.45		✓	✓	45°	2,99	5,00	5,35
60.45		✓	✓	45°	3,59	6,00	8,02
70.45		✓	✓	45°	4,18	7,00	9,35
15.65		✓	✓	65°	0,90	1,50	2,00
20.65	✓	✓	✓	65°	1,20	2,00	2,67
25.65		✓	✓	65°	1,49	2,50	3,34
30.65	✓	✓	✓	65°	1,79	3,00	4,01
35.65		✓	✓	65°	2,09	3,50	4,68
40.65		✓	✓	65°	2,39	4,00	5,35
45.65		✓	✓	65°	2,69	4,50	5,99
50.65	✓	✓	✓	65°	2,99	5,00	6,68
55.65		✓	✓	65°	3,29	5,50	7,35
60.65	✓	✓	✓	65°	3,59	6,00	8,02
65.65		✓	✓	65°	3,88	6,50	8,69
70.65		✓	✓	65°	4,18	7,00	9,35
75.65		✓	✓	65°	4,48	7,50	10,02
80.65		✓	✓	65°	4,78	8,00	10,69
85.65		✓	✓	65°	5,08	8,50	11,36



# Spraying nozzles Type J

Full cone nozzles, for systems of continuous straining usage.



Measures in mm

	A	B	C	D	SW
<b>1/4 GAS</b>	10	25	21	21	22
<b>3/8 GAS</b>	10	25	21	21	22
<b>1/2 GAS</b>	10	27	26	26	27

Material: Brass

Reference	Ring			Angle	Flow (l/min)		
	1/4	3/8	1/2		1 bar	2,8 bar	5 bar
90.65		✓	✓	65°	5,38	9,00	12,03
95.65		✓	✓	65°	5,68	9,50	12,69
100.65		✓	✓	65°	5,98	10,00	13,36
120.65		✓	✓	65°	7,17	12,00	16,04
30.80		✓	✓	80°	1,79	3,00	4,01
35.80		✓	✓	80°	2,09	3,50	4,68
40.80		✓	✓	80°	2,39	4,00	5,35
50.80		✓	✓	80°	2,99	5,00	6,68
60.80		✓	✓	80°	3,59	6,00	8,02
80.80		✓	✓	80°	4,78	8,00	10,69
100.80		✓	✓	80°	5,98	10,00	13,36
110.80		✓	✓	80°	6,57	11,00	14,70
118.80		✓	✓	80°	7,05	11,80	15,77
30.90		✓	✓	90°	1,79	3,00	4,01
35.90		✓	✓	90°	2,09	3,50	4,68
40.90		✓	✓	90°	2,39	4,00	5,35
45.90		✓	✓	90°	2,69	4,50	6,01
50.90		✓	✓	90°	2,99	5,00	6,68
55.90		✓	✓	90°	4,78	5,50	7,35
60.90		✓	✓	90°	5,98	6,00	8,02
65.90		✓	✓	90°	3,88	6,50	8,69
75.90		✓	✓	90°	4,48	7,50	10,02
80.90		✓	✓	90°	4,78	8,00	10,69
90.90		✓	✓	90°	5,38	9,00	12,03
100.90		✓	✓	90°	5,98	10,00	13,36
110.90		✓	✓	90°	6,57	1,00	14,70
120.90		✓	✓	90°	7,17	12,00	16,04