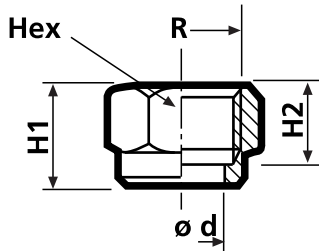
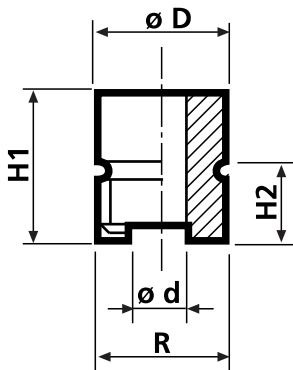
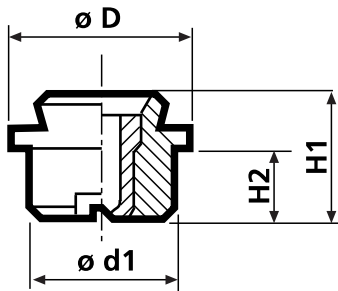




Spraying nozzles Type CM 3/8"

Flat spraying nozzle, used in the systems of refrigeration, cleaning and water curtain.
Nipple and screw set up.
Fitted by dovetail joint.



Measures in mm

øD	ød1	H1	H2
14,8	12,25	12	7

Material: Brass or inox

Nipple measures in mm

øD	H1	H2	ød	R
17	18	10	7,5	3/8" G

Material: Brass or inox

Screw measures in mm

R	Hex	H1	H2	ø d
3/8" G	22	13	10	12,5

Material: Brass or inox

Usage: Washing, turning off, and refrigeration. Cleaning, washing and refrigeration of gas.

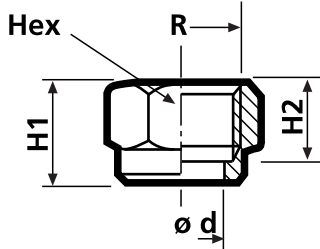
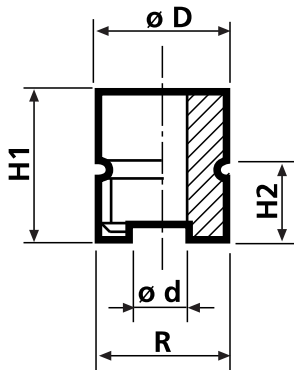
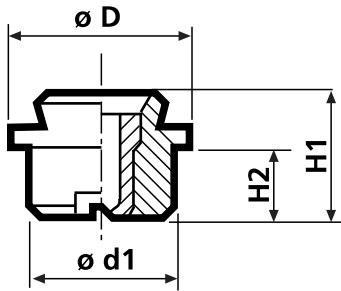
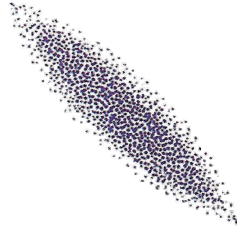
For the request of **adapted products**, the following specifications are needed:

- Material
- Pulverization angle
- Kind of nozzle
- Ring
- Flow (l/min or l/h)
- Work pressure

The nominal flow is pulverizing water in normal conditions in an aerial way.

Reference	Angle	Flow (l/min)		
		1,5 bar	3 bar	5 bar
02.30	30°	1,15	2	2,50
03.30	30°	1,75	3	3,95
05.30	30°	2,80	5	6,30
08.30	30°	4,50	8	9,95
10.30	30°	5,65	10	12,65
12.30	30°	7,10	12	15,80
02.45	45°	1,15	2	2,50
03.45	45°	1,75	3	3,95
05.45	45°	2,80	5	6,30
08.45	45°	4,50	8	9,95
10.45	45°	5,65	10	12,65
12.45	45°	7,10	12	15,80
02.60	60°	1,15	2	2,50
03.60	60°	1,75	3	3,95
05.60	60°	2,80	5	6,30
08.60	60°	4,50	8	9,95
10.60	60°	5,65	10	12,65
12.60	60°	7,10	12	15,80

The information included in this catalogue is merely informative. TOBE reserves the right to introduce modifications without prior notice. For any enquiry about any product that it is not included in this catalogue, please do not hesitate to contact with TOBE.



Measures in mm

$\varnothing D$	$\varnothing d1$	H1	H2
14,8	12,25	12	7

Material: Brass or inox

Nipple measures in mm

$\varnothing D$	H1	H2	$\varnothing d$	R
17	18	10	7,5	3/8" G

Material: Brass or inox

Screw measures in mm

R	Hex	H1	H2	$\varnothing d$
3/8" G	22	13	10	12,5

Material: Brass or inox

Reference	Angle	Flow (l/min)		
		1,5 bar	3 bar	5 bar
02.90	90°	1,15	2	2,50
03.90	90°	1,75	3	3,95
05.90	90°	2,80	5	6,30
08.90	90°	4,50	8	9,95
10.90	90°	5,65	10	12,65
12.90	90°	7,10	12	15,80
02.120	120°	1,15	2	2,50
03.120	120°	1,75	3	3,95
05.120	120°	2,80	5	6,30
08.120	120°	4,50	8	9,95
10.120	120°	5,65	10	12,65
12.120	120°	7,10	12	15,80

The information included in this catalogue is merely informative. TOBE reserves the right to introduce modifications without prior notice. For any enquiry about any product that it is not included in this catalogue, please do not hesitate to contact with TOBE.